

Colordyne 1600-S Quick Start Guide

Powered by
memjet[®]



Step 1

Remove the Printer and Accessories from packaging.

Place the Printer on a stable surface.

Step 2

Hydrate the Printhead.

Before you begin assembling the Printer, it is a good idea to hydrate the Printhead Cartridge for about 20 minutes.

CAUTION

- Use electrostatic discharge (ESD) protection when handling.
- Hold the Printhead Cartridge by the handles **ONLY**.
- **DO NOT** touch the ink couplings, nozzle surface or electrical contacts.
- **DO NOT** unpack the Printhead Cartridge until the Printer is ready for installation. Once unwrapped, delay in installing the Printhead can compromise print quality due to dehydration.
- **DO NOT** place an unwrapped Printhead on any surface before installing. Protect the Printhead from dust, fibers, dirt and other contaminants at all times.

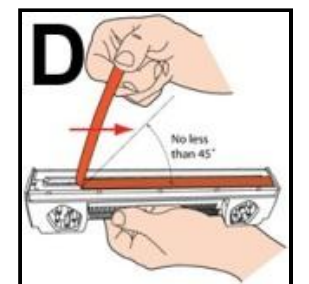
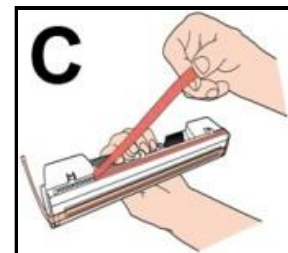
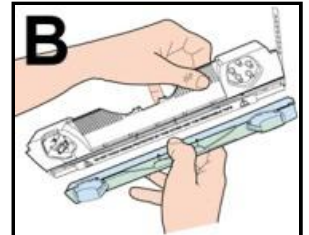
1. Carefully remove the Printhead Cartridge from the foil packaging.

[A] Tear at notch or cut end with scissors.

[B] Remove the protective plastic cover. Hold the Printhead by the handle and unclip the cover from the Printhead.

[C] Remove protective strip from the Printhead Electrical Contacts. **DO NOT** allow removed strip to touch the electrical contacts.

[D] Remove protective strip from the Printhead Nozzles. Hold the Printhead by the handle with one hand. Pull the strip tab with the other hand and slowly peel the strip from the Printhead. **DO NOT** pull the strip at any angle less than 45° with the Printhead surface. **DO NOT** allow removed strip to touch the Printhead Nozzles.



2. Pour just enough distilled water into the orange plastic cover you removed in Step 1B to moisten the bottom strip inside. Carefully reinstall the Printhead back into the plastic cover. Set the Printhead aside for installation later. This rehydrates the Printhead and allows easier priming once it is installed in the Printer.

Step 3

Remove Service Station Transport Tab

1. Open the Top Cover.
2. Release the two latches (one on either side of the Print Engine). Open the top half of the Print Engine by lifting both levers at the same time.



CAUTION

OPERATE AND HOLD ONTO BOTH LATCHES WHEN OPENING AND CLOSING THE PRINTHEAD ASSEMBLY TO PREVENT DAMAGE.

DO NOT ALLOW THE ASSEMBLY TO DROP BY ITSELF TO WHEN CLOSING.

TO PREVENT DAMAGE TO THE INK LINES, A STOP LIMITS RAISING THE ASSEMBLY MORE THAN 60°.

3. Pull up on the two tabs to remove the cardboard Transport Tab from the Service Station.

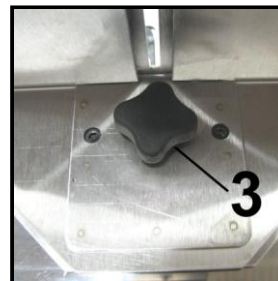
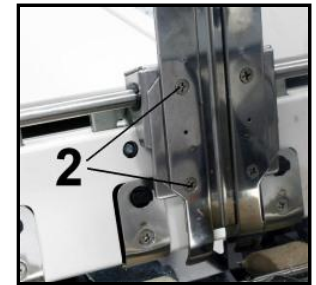
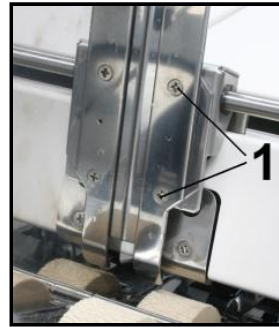


4. Carefully close and relatch the Upper Print Engine. Close the Top Cover.

Step 4

Assembly

Assemble the Adjustable Side Guide [1], Envelope/Paper Side Guide [2], Rear Paper Support [3], and Back Guide [4]. Save the packing material.



Step 5

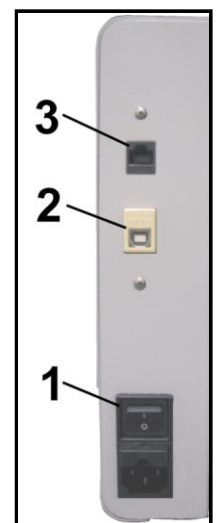
Connect the Power to the Printer

1. Make sure that the main power switch [1] is in the OFF position.
2. Connect the power cord into the receptacle located just below the power switch.

Connect the Printer to the Computer

The USB cable from your computer plugs into the printer's USB port [2].

NOTE: Network port [3] is for operating in a network environment.



DO NOT CONNECT THE USB CABLE OR NETWORK CABLE AT THIS TIME.

DO NOT TURN THE PRINTER POWER SWITCH [1] ON AT THIS TIME.

Step 6

Print Driver Installation

Print Driver Installation

Minimum System Requirements:

- Windows XP, Windows Vista, Windows 7. (Supports 32 and 64 bit systems)
- You must have administrative privileges on the system.
- Microsoft Internet Explorer 6.0 or higher.
- Java version 6 or higher
- USB 2.0 port (ports will be identified as “USB2” or “Enhanced” in the Device Manager.)
- Microsoft .NET Framework 3.5 installed (**Even if you have a higher version installed, version 3.5 must also be installed.**)

IMPORTANT: Before installing the Printer software (Toolbox and Driver), **temporarily disable all antivirus programs and firewalls.** In addition, you must be logged onto the system with full administrative privileges (admin rights).

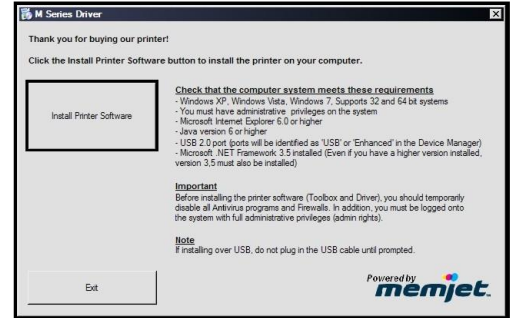
1. **Make sure the Printer is plugged in and turned OFF. Disconnect the USB connection if you have plugged it in already. Insert the “1600-S Printer Drivers and Instructions” Disk into your CD/DVD drive.**



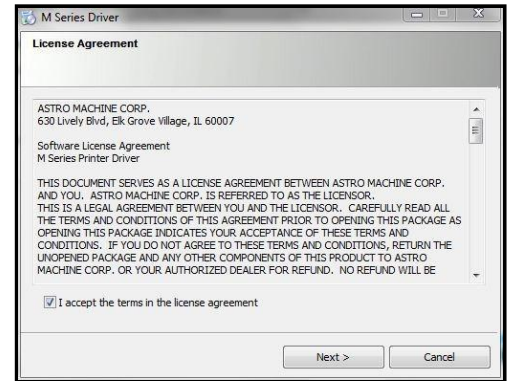
2. When the AutoPlay Window opens, click “Run Setup.exe” to start.



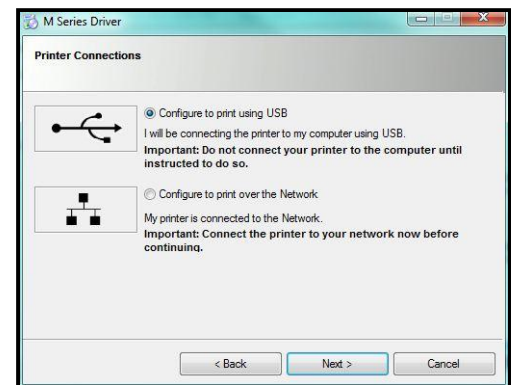
3. The “Install Printer Software” window opens on the computer screen. Click “Install Printer Software”.



4. The **License Agreement** window opens. Carefully read the “End User Agreement”. If you agree to the terms, check “I accept...” then click “Next>”.



5. After a few moments the “Printer Connections” window opens. Click "Configure to print using USB". Then click “Next>”.



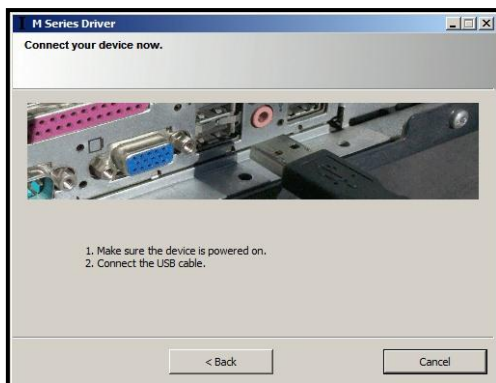
6. After a few moments the “M Series Driver” window opens followed by the “Would you like to install this device software?” window. Click “**Install**” and the driver software will load from the disk.



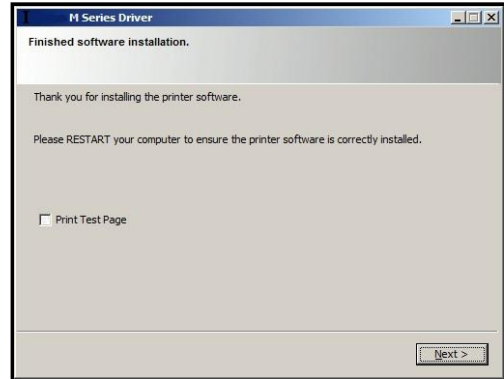
7. The software will start to download and a second “Would You Like to Install This Device Software” opens. Click **Install**.



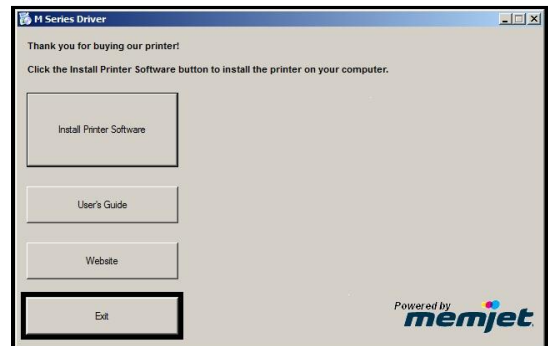
8. The “**Connect Device Now**” window opens. Switch the Printer ON and connect the USB cable. **Don't click on either button.** The software will then finish installing.



9. The “**Finished software installation**” window opens. Do not print a test page since printer is not set up yet. Do not check the Print Test Page. Click **Next>**.



10. The Printer Driver welcome window returns. Note that you can click on the **User's Guide** for installation, document set up and printer maintenance, cleaning and troubleshooting information. If you are connected to the Internet you can click **Website**. Click **Exit** to close the Print Driver CD.



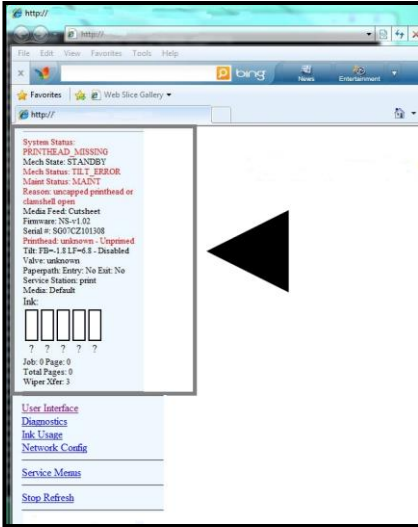
11. Restart the computer to complete the installation.

Step 7

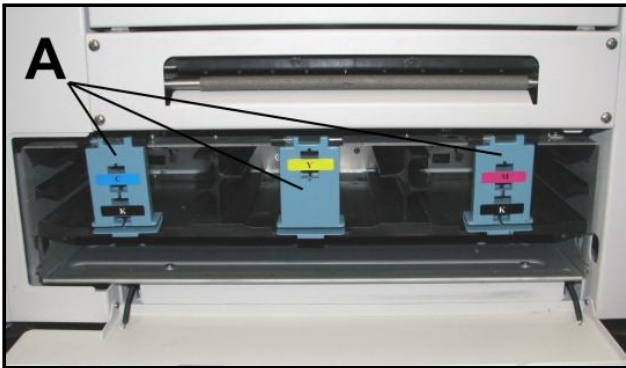
Install the Ink Tanks

This Printer uses a single Printhead Cartridge and five Ink Tanks (*two Black, one Cyan, one Magenta, and one Yellow*). Install the Ink Tanks as follows:

1. **Open the Printer Toolbox.** Go to All Programs, open the Printer Folder and open the Toolbox. On the Opening Screen you will see System Status information in the upper left corner.

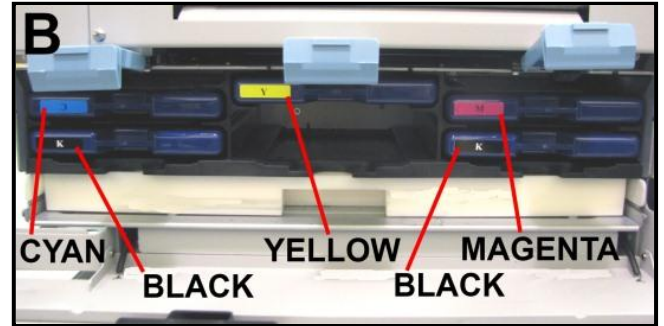


2. Open the Front Cover (hinged at bottom). Open the three Latches [A].

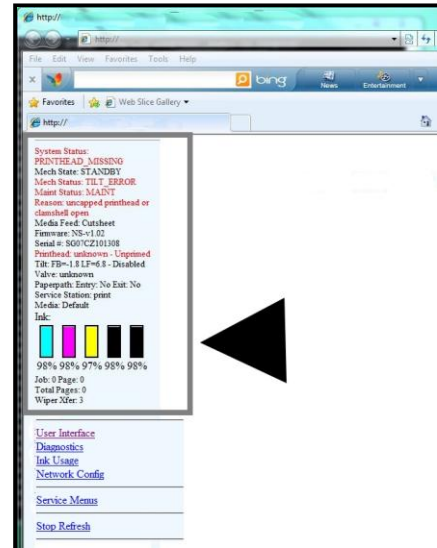


3. Remove the Ink Tank(s) from packaging.

4. Slide the new Tanks (label up) into their appropriate color slots [B]. **INSTALLATION TIP – Make sure the Tanks seat properly. Insert the Tank into the appropriate Ink Station, then pull the Tank back about an inch and push forward firmly to insure that the Ink Nozzles penetrate the seals on the Tanks.**



5. Watch the Toolbox screen on your computer; you will see the ink colors fill in as the Tanks are installed. If the ink color does not fill in after a few seconds, reinstall the Tank.



6. Close the three Latches. Close the Front Cover.

WARNING!

The ink in the Ink Tanks may be harmful if swallowed. Keep new and used Tanks out of reach of children. Discard empty tanks immediately.

Step 8

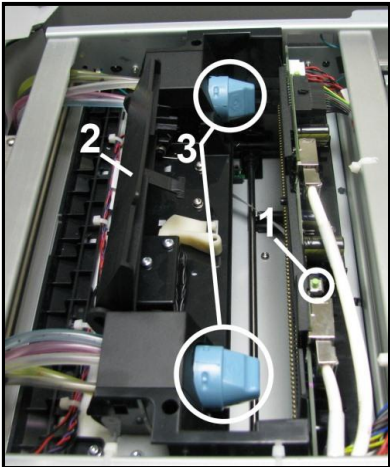
Install the Printhead Cartridge

The Printhead Cartridge is a delicate precision device. Handle with extreme care to avoid damage and issues that could degrade print quality.

CAUTION

- Use ESD protection when handling.
- Hold the Printhead Cartridge by the handles **ONLY**.
- **DO NOT** touch the ink couplings, nozzle surface or electrical contacts.
- **DO NOT** unpack the Printhead Cartridge until the Printer is ready for installation. Once unwrapped, delay in installing the Printhead can compromise print quality due to dehydration.
- **DO NOT** place an unwrapped Printhead on any surface before installing. Protect the Printhead from dust, fibers, dirt and other contaminants at all times.

1. With the Printer power ON, open the Top Cover. Press the Printhead Cover Release Button [1]. The Printer will run a routine, then the Printhead Cover will pop open [2]. **NOTE – Remove the Cap Protectors on the Ink Nozzles [3]. Be sure to open the Printhead Cover fully to retract the Ink Nozzles.**

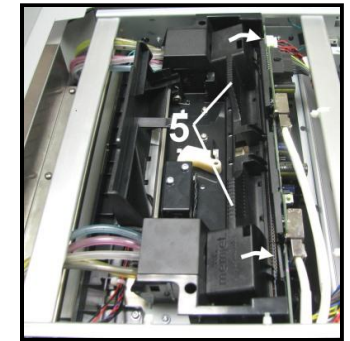
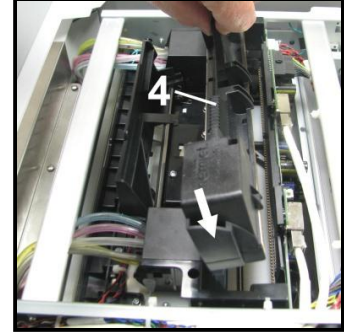


CAUTION

DO NOT PRY OR MANUALLY LIFT THE PRINthead COVER OR THE COVER MAY BREAK. ONLY OPEN THE COVER USING THE RELEASE BUTTONS ON THE PRINTER OR THE PRINthead RELEASE COMMANDS IN THE SERVICES TAB OR M SERIES TOOLBOX.

2. Take the Printhead Cartridge you hydrated and set aside earlier, remove the orange cover and proceed to **Step 3**.

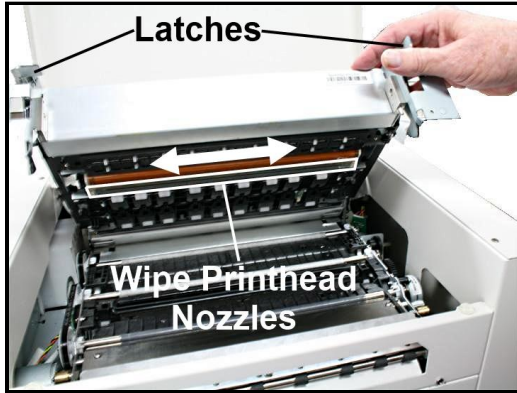
3. Carefully insert the Cartridge into the compartment at an angle [4], with the Printhead surface facing down and the Ink Nozzles facing the Ink Hoses. Once it is seated, gently tilt the Cartridge back until it snaps into an upright position [5]. **DO NOT FORCE the Cartridge into position.**



WARNING!

TO AVOID ELECTRICAL SHOCK OR SHORTING: Before installing the Printhead, make sure the nozzles are hydrated and the contacts are DRY!

- Wet the Printhead Surface. This ensures that the Printhead will prime correctly. Open the Top Cover. Release and lift up the two latches at the same time to raise the Printhead Assembly. Moisten the Printhead nozzles using distilled water and a damp, lint-free cloth, wiping end to end. (Gray strip located below orange strip.) Close and relatch the Printhead Assembly.



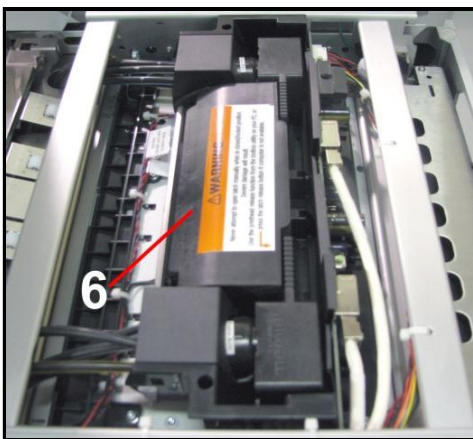
CAUTION

OPERATE AND HOLD ONTO BOTH LATCHES WHEN OPENING AND CLOSING THE PRINthead ASSEMBLY TO PREVENT DAMAGE.

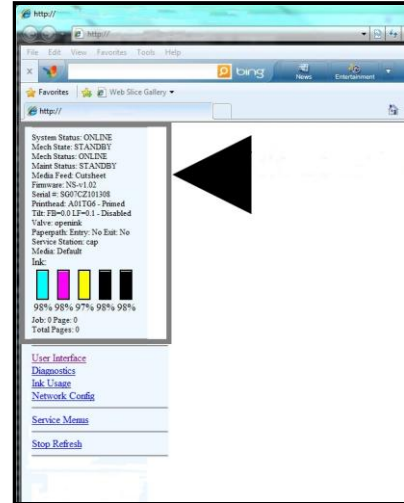
DO NOT ALLOW THE ASSEMBLY TO DROP BY ITSELF TO WHEN CLOSING.

TO PREVENT DAMAGE TO THE INK LINES, A STOP LIMITS RAISING THE ASSEMBLY MORE THAN 60°.

- Close the Printhead Cover [6]. The Printer will run a start-up routine and priming ink into the Printhead. This may take a few minutes. Make sure that ink is flowing through the hoses.



- Watch the Toolbox screen on your computer again. Notice that some of the information is in red. As the Printer circulates ink and primes the system these fields should all turn black.



- When the Printer stops processing and all the fields in System Status are black, the Printer is ready for use. Close the Top Cover.

NOTE: The Printer may take up to 12 minutes to set itself up during initial startup. This is normal. The machine will emit a number of chirps, whirrs and other noises as it circulates ink and runs systems.

Step 9

For instructions on installing the Accessories and Printer set-up or operation, please refer to the "Colordyne 1600-S Color Page Printer Operator Manual", supplied with the machine.



8281 E. Gelding Drive
Scottsdale, AZ 85260
Phone: 1.262.784.1932
www.colordynetech.com